

BigStar
LED
SHENZHEN BIGSTAR OPTOELECTRONIC CO., LTD

LIGHT UP YOUR CREATIVITY AND MAKE EVERY STAGE BRILLIANT



Scan and find us

BigStar
LED
SHENZHEN BIGSTAR OPTOELECTRONIC CO., LTD

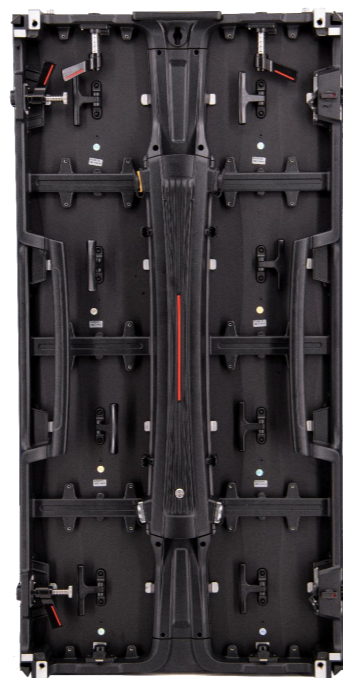
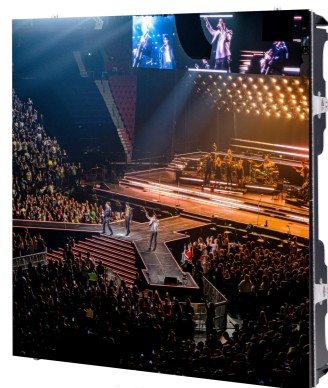
Tel: +86(755)8259-7092
Email: info@bigstarled.com
Website: www.bigstarled.com

Address: Building C, Tianyou Chuangke Industrial Park, No. 2 Lixin Road, Qiaotou Community, Fuhai Street, Bao'an District, Shenzhen City, China

RS&RSO Rental SERIES

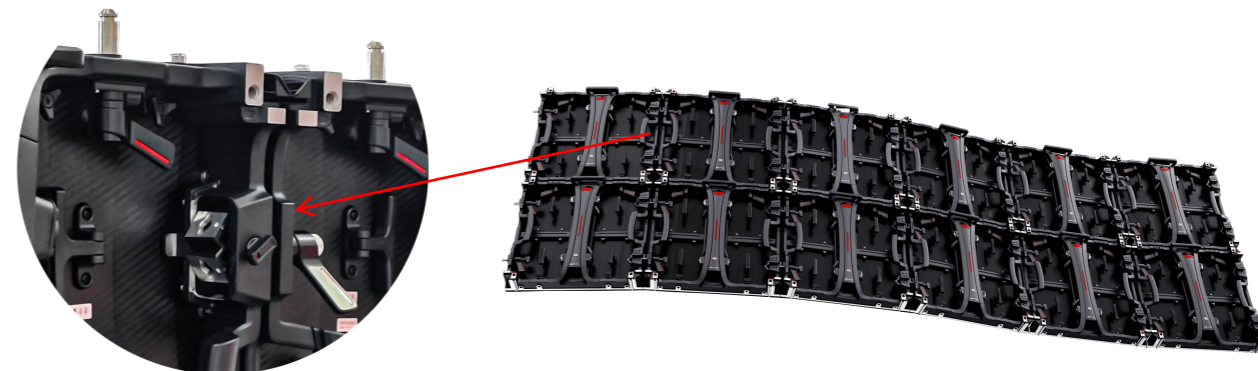
Indoor&Outdoor Rental LED Display

- Designed for indoor & outdoor rental
- Independent power supply box
- Curved lock with -6 -3 0 +3 +6 degree
- Universal module
- Corner protection

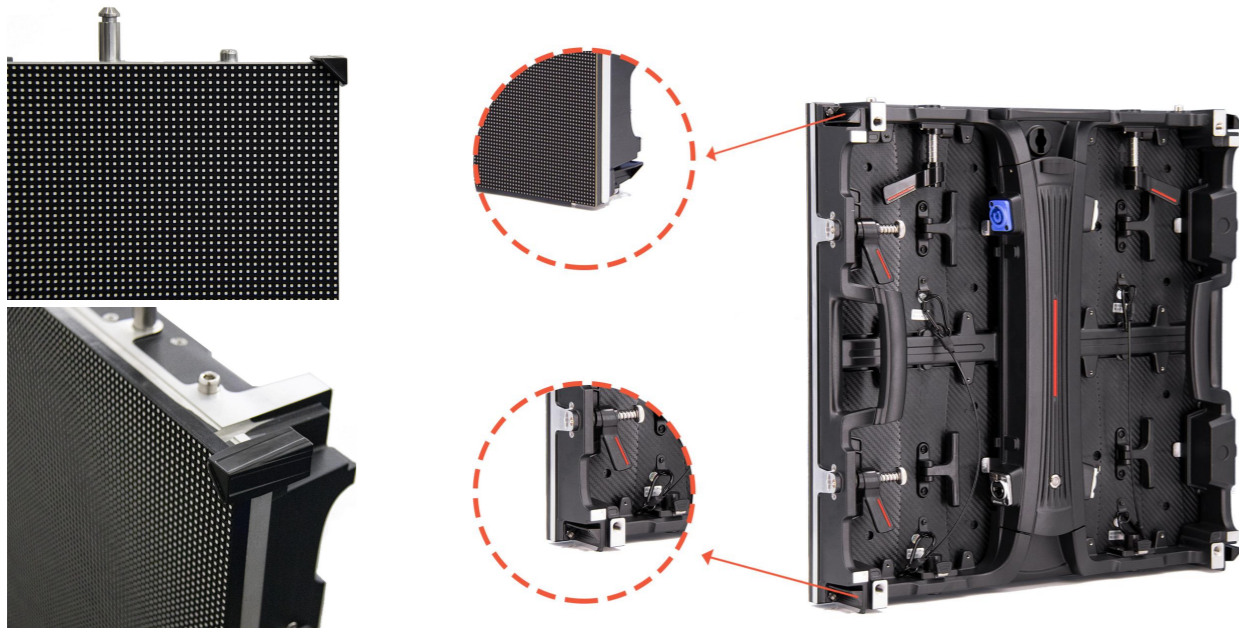


500X500mm&500x1000mm

Curved lock with -6 -3 0 +3 +6 degree

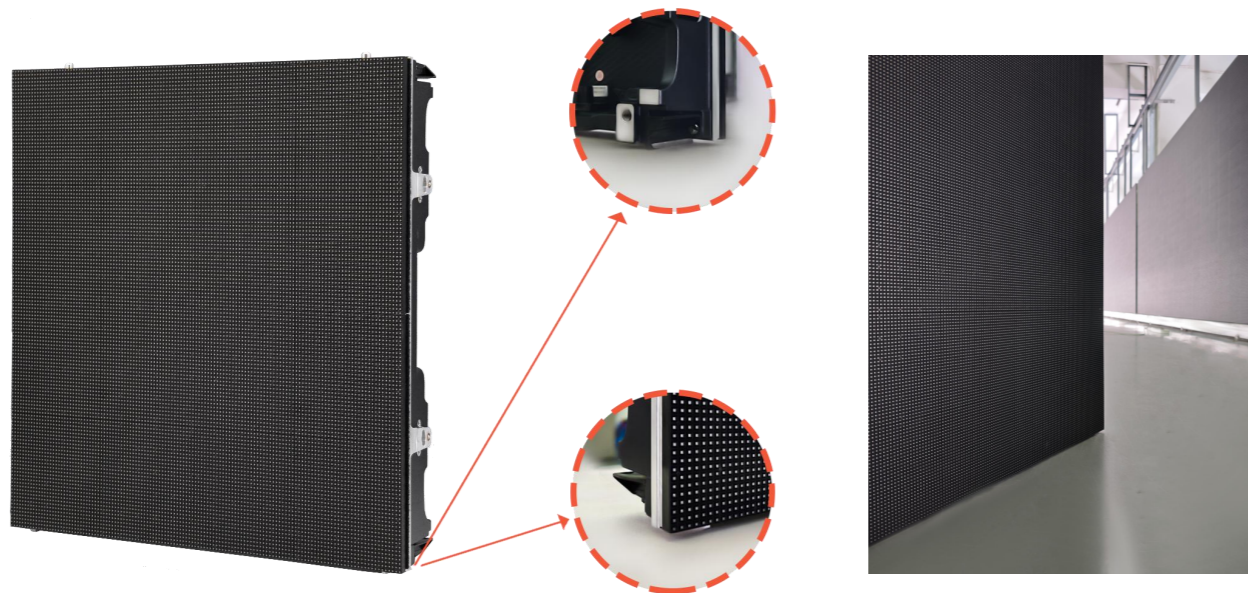


Module Protection Design



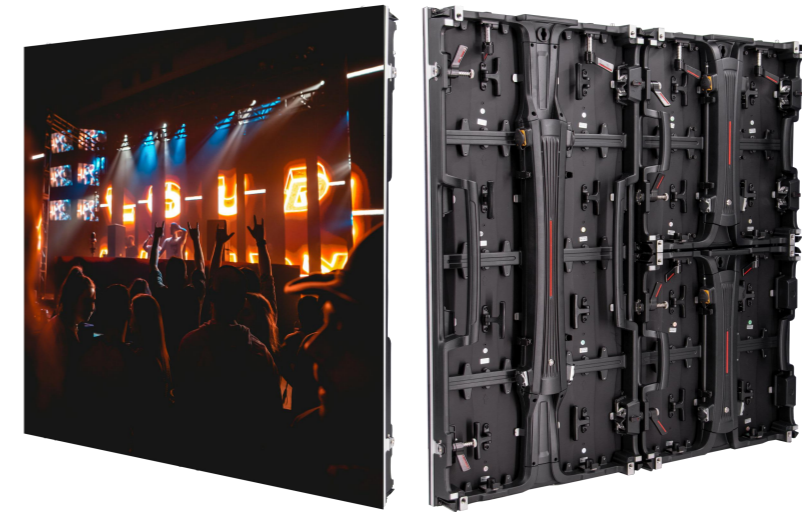
Corner protection design

Protection design on the corner of cabinet&cabinet bottom with the raise design, considered the bottom lamps can be well protected when putting on the ground.



Cabinet bottom with the raise design

Different cabinet combine together



500x500mm & 500x1000mm

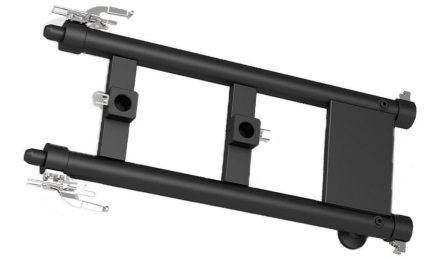
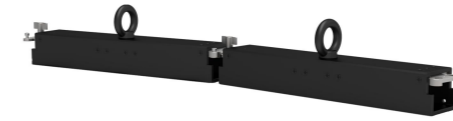
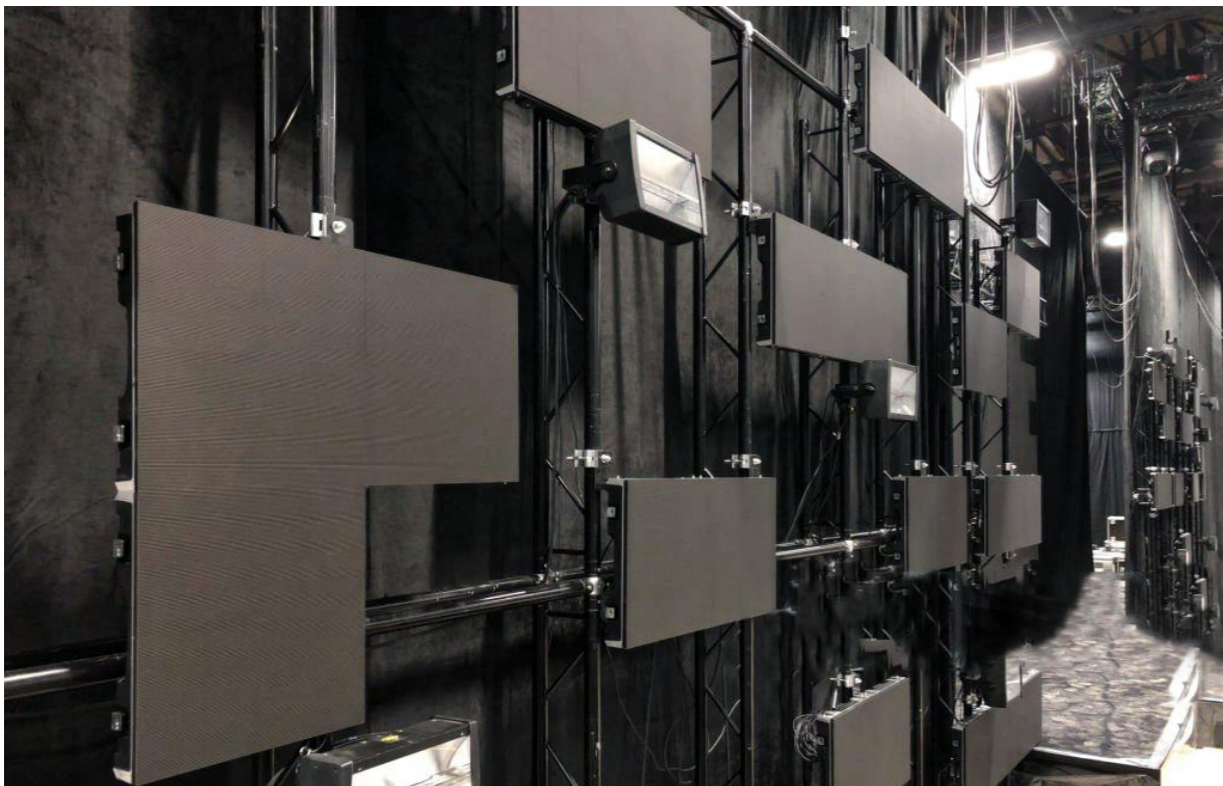


The flat cabinet and curved cabinet combine together

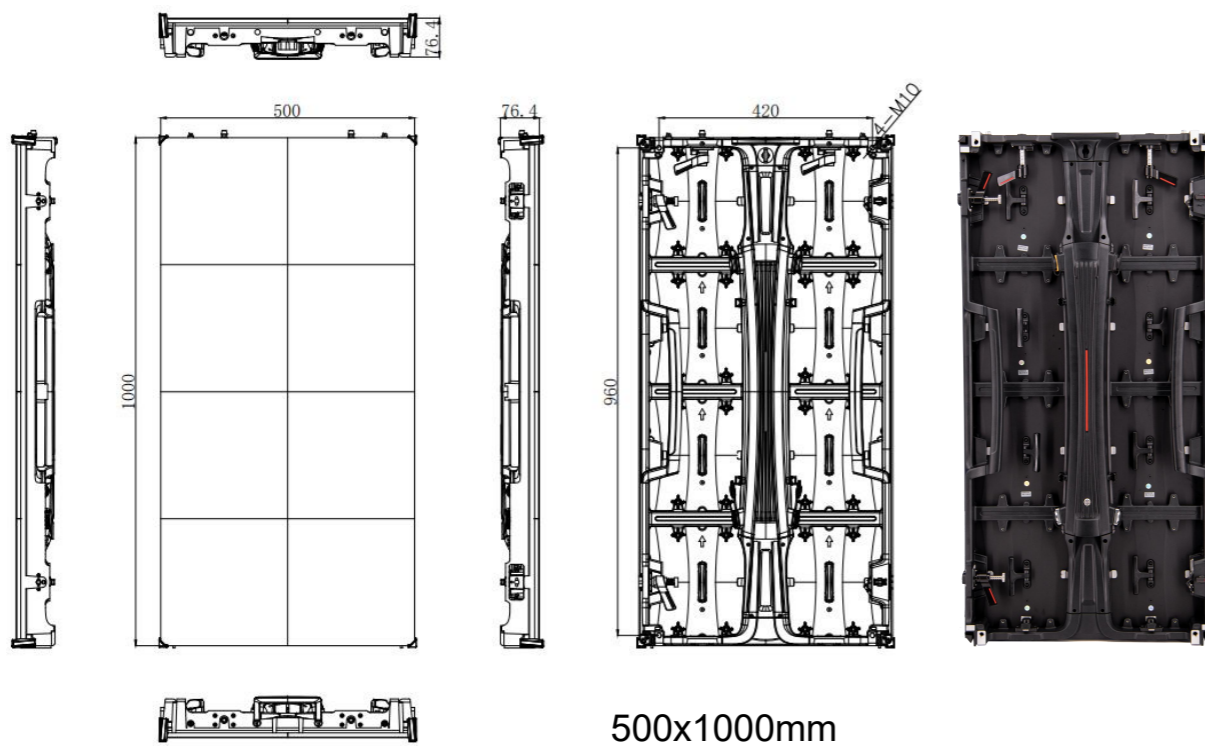
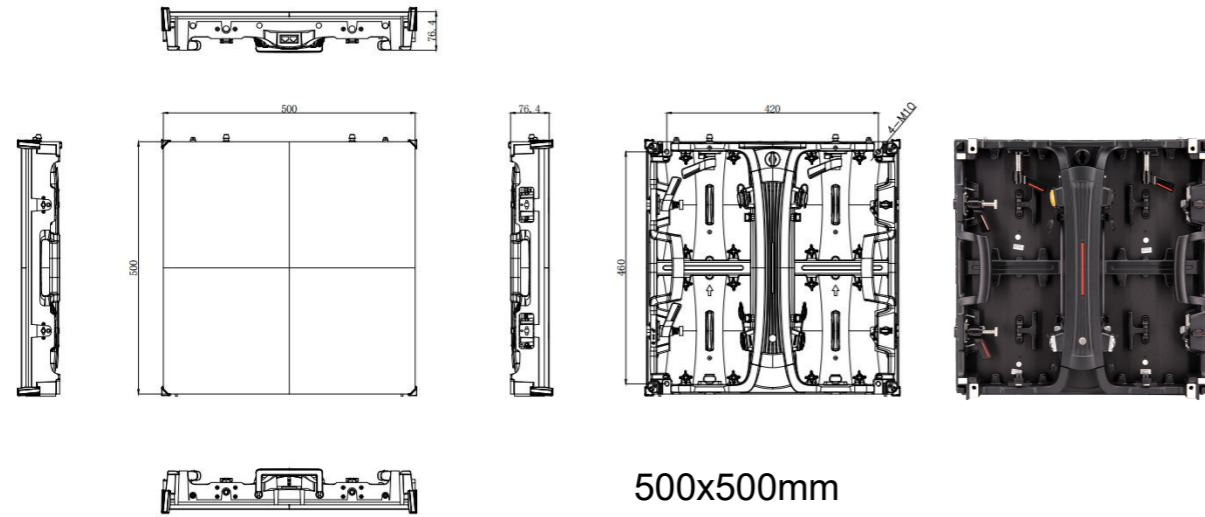
RS&RSO rental series make every stage brilliant!



LED accessories, assisted creative presentation on stage



Cabinet Size



Product Parameter

Parameter	RS2.6	RS2.9	RS3.9
Pixel pitch(mm)	2.6	2.9	3.9
LED type	SMD1515	SMD2020	SMD2020
Pixel density(dots/m ²)	147,456	112,896	65,536
Module size(mm)	250*250		
Module resolution(pixels)	96*96	84*84	64*64
Cabinet size(mm)	500*500 & 500*1000		
Cabinet weight(kg)	7.5&13.5		
Brightness(nits)	≥800		
Max power(w/m ²)	450	480	450
Average power(w/m ²)	160	170	160
Ingress protection	IP30		
Refresh rate(HZ)	3,840~7,680		
Parameter	RSO2.9	RSO3.9	RSO4.8
Pixel pitch(mm)	2.9	3.9	4.8
LED type	SMD1515	SMD1921	SMD1921
Pixel density(dots/m ²)	112,896	65,536	43,264
Module size(mm)	250*250		
Module resolution(pixels)	84*84	64*64	52*52
Cabinet size(mm)	500*500 & 500*1000		
Cabinet weight(kg)	7.5&13.5		
Brightness(nits)	≥4,500		
Max power(w/m ²)	560	480	520
Average power(w/m ²)	190	170	180
Ingress protection	IP54		
Refresh rate(HZ)	3,840~7,680		
Authentication	CE/FCC		

Note: Specifications are for reference only and are subject to change without notice.