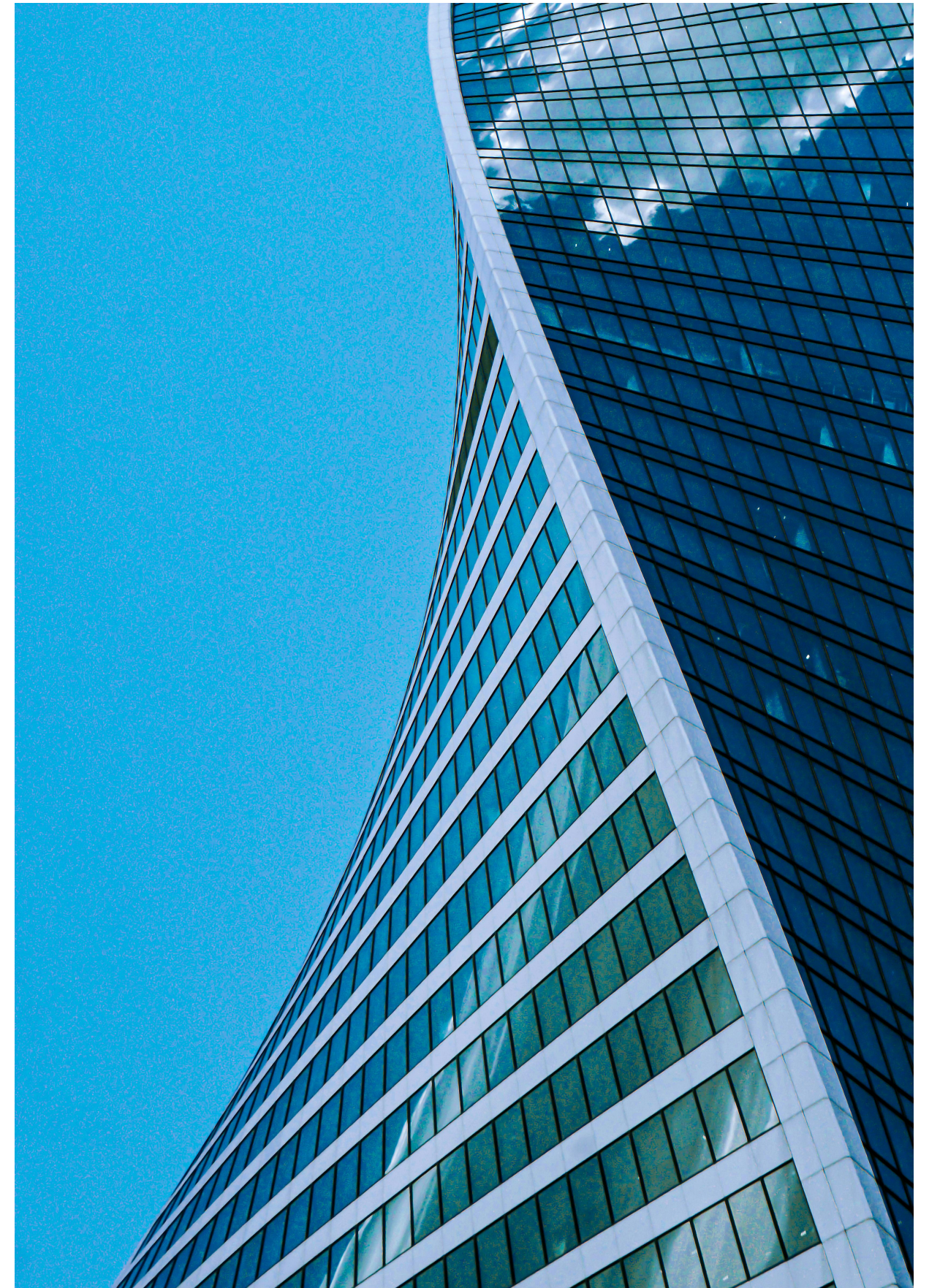


FO SERIES OUTDOOR FIXED LED DISPLAY



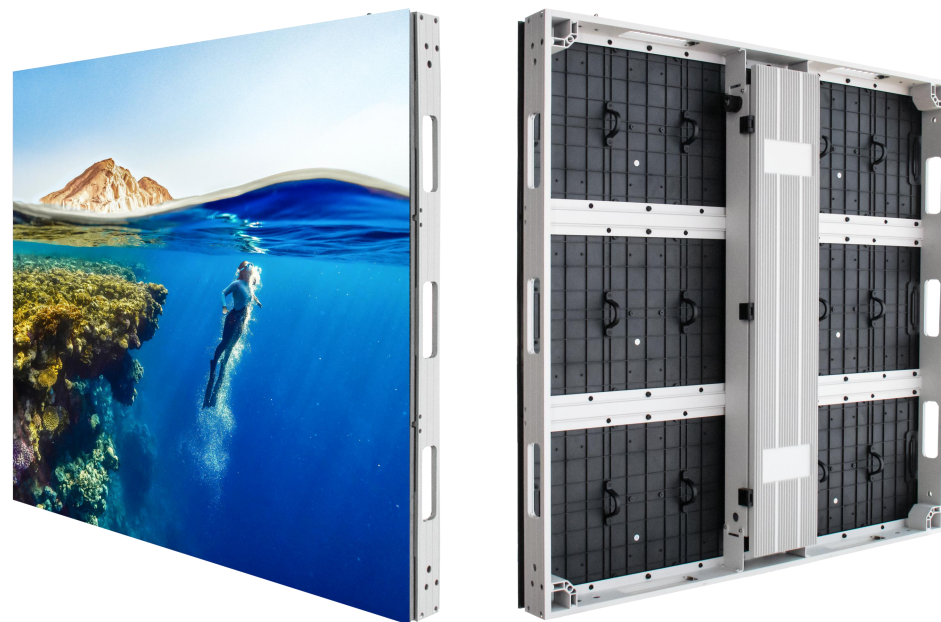
Scan and find us



## FO Series

Outdoor Fixed LED Display

- Energy saving design
- Front or rear maintenance
- Support for 3D display
- High brightness option 12,000nits
- Customized cabinet size:  
960/800/640\*960/640/320mm
- Ingress protection 66



960x960mm

## High brightness option 12,000nits



## Front or rear maintenance



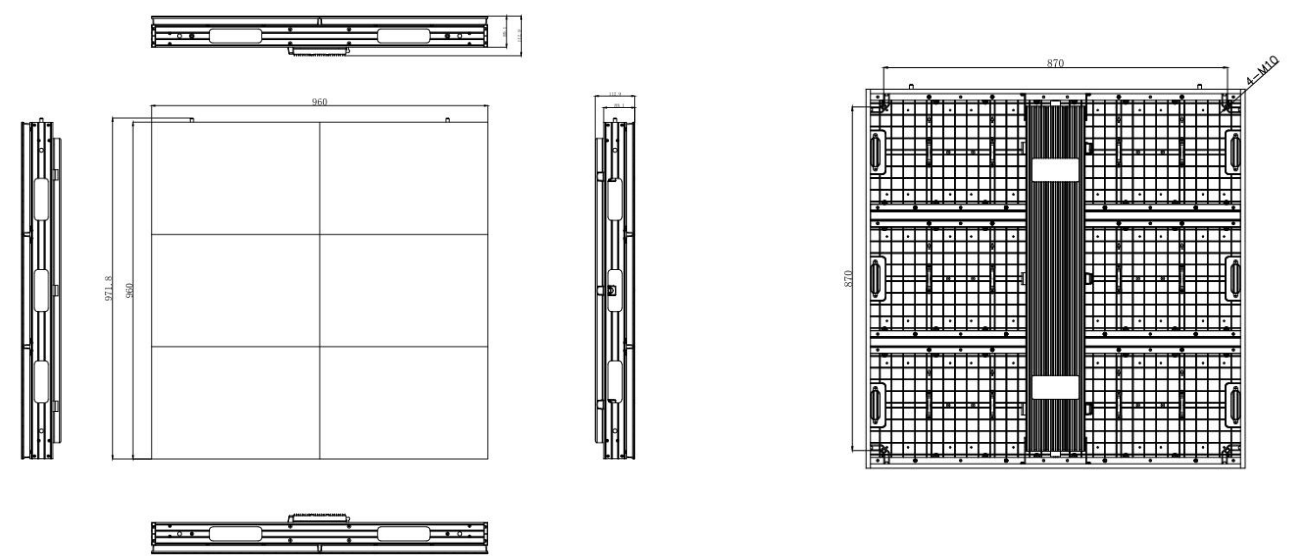


Support for 3D display, make excellent sight

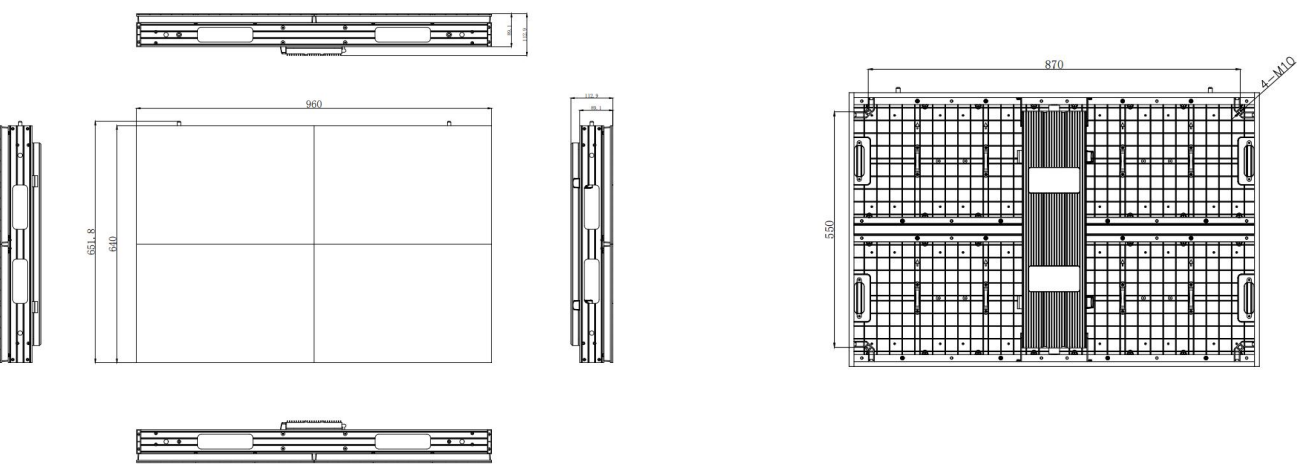




Cabinet Size



960\*960mm



960\*640mm

Product Parameter

Parameter	FO4.4	FO5.9	FO6.6	FO8	FO10
Pixel pitch(mm)	4.4	5.9	6.6	8	10
LED type	SMD1921	SMD1921	SMD2727	SMD2727	SMD2727
Brightness(nits)	5,000~7,500	5,500~8,000	6,000~12,000	6,000~10,000	6,000~12,000
Pixel density(dots/m2)	50,625	28,476	22,500	15,625	10,000
Module size(mm)	480*320		480*320 320*320		
Module resolution(pixels)	108x72	81x54	72x48 48x48	60x40 40x40	48x32 32x32
Cabinet size(mm)	960*960				
Cabinet weight(kg)	19.5				
Maintenance	Front / Rear				
Ingress protection	IP66				
Best viewing distance(m)	≥4.4	≥5.9	≥6.6	≥8	≥10
Material	Profile Aluminum				
Color temperature(k)	2,000~9,500				
Viewing angle	140°				
Max power(w/m2)	590	590	560	560	560
Average power(w/m2)	160	160	150	150	150
Input voltage(v/ac)	100~240				
Gray scale(bit)	≥14				
Refresh rate(Hz)	3,840~7,680				
LED Life Time(hours)	100,000				
Authentication	ETL/CE/CB/FCC				

Note: Specifications are for reference only and are subject to change without notice.